



**SPEEDCRAFTS**<sup>®</sup>  
ASPHALT & CONCRETE EQUIPMENT

# ASPHALT BATCH MIX PLANT



80 TPH, 120 TPH, 160 TPH  
180 TPH, 200 TPH

# SPEEDCRAFTS<sup>®</sup>

Speedcrafts is a renowned Indian manufacturer of Asphalt Drum Mix Plants, Concrete Batching Plants, Pavers, Rollers, Bitumen Sprayers, Road Sweepers etc.

With design, drawing & technology from a European company, we are manufacturing Asphalt Batch Plants at our modern manufacturing facility in Patna. Our state-of-art Batch Plants will exceed all customer expectations with their:

- User friendly controls
- Fast & easy installation and start-up
- Low maintenance costs
- Excellent fuel efficiency

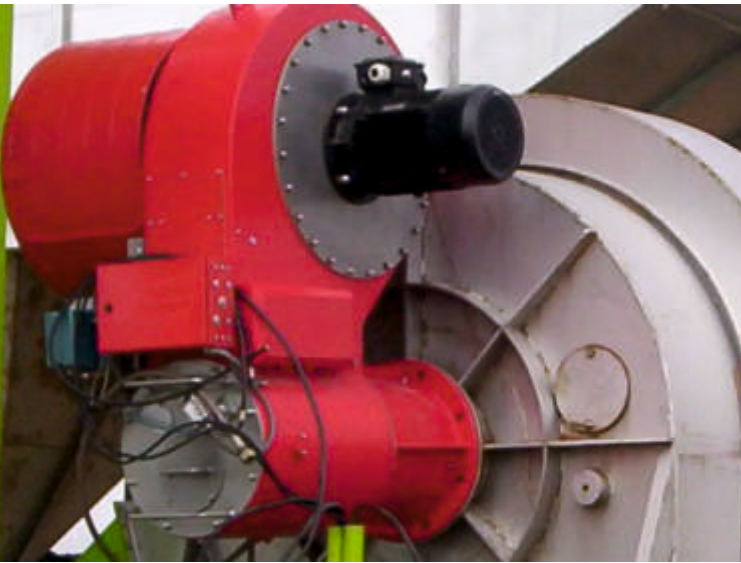


---

## DRYER DRUM

---

It is designed for longer life. Proven flight design ensures a perfect distribution of material to be dried. The drum is guided through two rolling steel rings on 4 trunion rollers, coupled with geared motors and bearings, mounted on a sturdy main frame.



---

## BURNER

---

Our modulating burner works with either diesel or heavy oil. Burner is provided with servo motor for air regulation and PID Controller for modulation.





---

## BATCHING TOWER

---

It is fully automatic to offer the best guarantee in terms of product quality. The operator can choose all the required process parameters and all components of the tower will become automatically set to obtain the requested product. The main units of the tower such as elevator, screen, hot aggregate storage bins and mixer are designed for long life, low maintenance and reliability.

---

## COLD FEED BINS

---

Plants are provided with heavy duty cold feed bins. Bins have self-relieving bottom opening, which eliminates bridging of the feeders. Each bin is provided with variable speed inverter drive through gear box and motor.



---

## CONTROL UNIT

---

Computerised Controls are provided for burner, temperature, damper, emergency plant shut down, sequential start and stop etc. The display shows Aggregate, Asphalt, Filler & Production TPH along with Temperature display of Aggregate, Asphalt, Exhaust & Mix Material. Daily production data can be printed out for records. Controls are mounted on a centralised Control Panel inside the Control Room.



---

## BAG HOUSE FILTER

---

Bag house filters remove the dust from the dryer's exhaust and comply with the most severe environmental regulations. They are fitted with safety devices for temperature control and automatic counter-flow cleaning through main exhauster and complete system for recovery and re-use of filler.

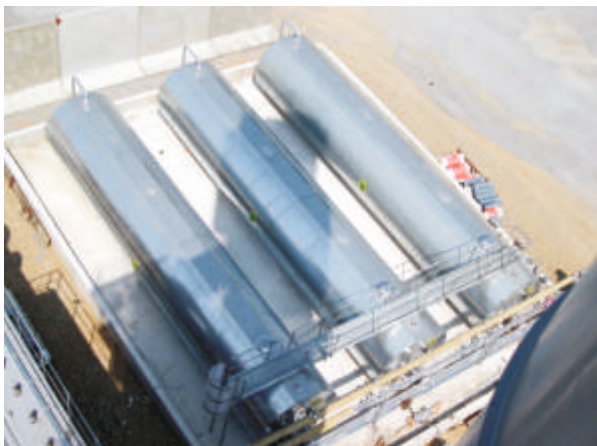


## TECHNICAL SPECIFICATION

PLANT MODEL			BM 80	BM 120	BM 160	BM 180	BM 200
	Plant Capacity *	tph	80	120	160	180	200
<b>COLD FEED BINS</b>							
	Number		4	4	4	4	4
	Capacity	cum	10	10	13	15	15
<b>DRYER DRUM</b>							
	L x D	mm	8000 x 1800	8000 x 2000	8000 x 2200	9000 x 2200	9000 x 2200
	Drive Type		4 Wheel, Friction Drive				
Burner	Type		High Pressure, Automatic, Modulating				
	Fuel		Heavy Oil / Diesel				
	Power	MW	7.1	9.3	12.4	14.2	15.5
<b>BATCHING TOWER</b>							
Screening	Method		Inclined Circular Vibration				
	No. of Selections		4 + DIR	4 + DIR	4 + DIR	4 + DIR	4 + DIR
Hot Aggregate Bin	Number		4	4	4	4	4
	Capacity	cum	5	10	10	12	12
Mixer	Type		Twin Shaft				
	Batch Size	kg	1000	1500	2000	2250	2500
	Cycle Time	sec	45	45	45	45	45
<b>POLLUTION CONTROL UNIT</b>							
	Type		Bag House filter				
	Filter Area	sqm	355	580	665	720	800
<b>CONTROL UNIT</b>							
	Type		Fully Computerized				
<b>ACCESSORIES</b>							
Filler silo	Capacity	cum	10	10	15	15	20
Bitumen Tanks		ton	1 / 30	1 / 30	2 / 30	2 / 30	2 / 30
	Heating System		Thermal Oil Heating				
Thermal Oil Heater	Capacity	kcal / hr	250,000	250,000	400,000	400,000	400,000
Fuel Tank	Capacity	ltr	10,000	10,000	15,000	15,000	20,000

\* Capacity at 3% moisture content

Due to our policy of continuous improvement, the technical data mentioned in this entire catalogue is not binding and subject to change without notice.



## BITUMEN TANK

Tanks are insulated with rock-wool, available in horizontal type and heated by thermal oil with automatic temperature adjustment. Suitable valves to control the charge, transfer and discharge of bitumen among tanks are provided.

## OTHER PRODUCTS AT A GLANCE



ASPHALT DRUM MIX PLANT



WET MIX MACADAM PLANT



CONCRETE BATCHING PLANT



MOBILE CONCRETE PLANT



PORTABLE CONCRETE PLANT



CONCRETE CONVEYOR



POTHOLE REPAIRING MACHINE



BITUMEN PRESSURE DISTRIBUTOR



DIESEL ROAD ROLLER



PAVER FINISHER



MOBILE HOT MIX PLANT



TROLLEY MOUNTED BITUMEN SPRAYER



ROAD SWEEPER



CHIP (AGGREGATE) SPREADER

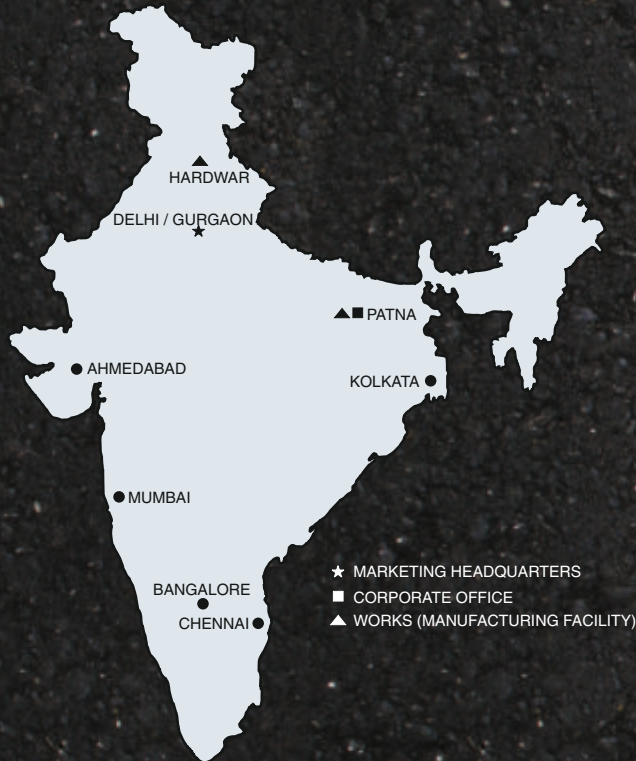


ROAD MARKING MACHINE

# SPEEDCRAFTS<sup>®</sup>

ASPHALT & CONCRETE EQUIPMENT

[www.speedcrafts.com](http://www.speedcrafts.com)  
[www.speedcrafts.net](http://www.speedcrafts.net)



## SPEEDCRAFTS PVT. LTD.

### MARKETING HEADQUARTERS

'Unitech Business Zone'  
Tower C, Unit No. 804  
Nirvana Country, Sector 50  
Gurgaon - 122 001, (Delhi NCR), India  
Tel : +91-124-2219968 / 2219928

### CORPORATE OFFICE

'Layak Bhawan'  
Boring Canal Road  
Patna - 800 001, Bihar, India  
Tel : +91-612-2534514 / 2520914  
Fax : +91-612-2527029

### REGIONAL OFFICE

'Neelamber Building'  
Flat No. 5F, 5<sup>th</sup> Floor  
28-B, Shakespeare Sarani  
Kolkata - 700 017, West Bengal, India  
Tel : +91-33-22804458 / 22905390

### MANUFACTURING UNITS

#### UNIT - I

Layak Enclaves, Sahay Nagar  
Phulwarisharif, Patna, Bihar, India

#### UNIT - II

Plot No.1A, Sector-7, IIE (SIDCUL)  
Hardwar, Uttarakhand, India

CIN : U34100BR1971PTC000904

[info@speedcrafts.com](mailto:info@speedcrafts.com)  
[info@speedcrafts.net](mailto:info@speedcrafts.net)

