

# SPEEDCRAFTS

ASPHALT & CONCRETE EQUIPMENT



AN ISO 9001  
CERTIFIED COMPANY



ASPHALT DRUM MIX PLANT

# SPEEDCRAFTS

[www.speedcrafts.com](http://www.speedcrafts.com)  
[www.speedcrafts.net](http://www.speedcrafts.net)

**Speedcrafts**, the flagship company of our group was established in 1971 in Patna, the capital of Bihar. From a modest beginning, today our manufacturing unit covers 27 acres of land, with approx. 25,000 sq. mtrs. (250,000 sq. ft.) of covered area, in-house machine shop, forging arrangement, fabrication shop, press shop, mechanical, hydraulic and electrical assembly facilities and paint shop as well as handling and packaging facilities. Over the past forty years **Speedcrafts Limited** has built a formidable reputation for quality and technical excellence of its products. With in-house R&D and technical collaboration with world-leaders in road making machine industry, backed by an ISO 9001 Certification, **Speedcrafts** is known for not only quality, but also for its commitment towards total customer satisfaction and implementation of projects on schedule.

Modern Manufacturing Facility



Asphalt Plants Under Production



# Asphalt Mixing Plants

## A TRADITION OF ENGINEERING EXCELLENCE...

Our asphalt plants built to stringent International and Indian standards have found acceptance and acclaim by all users.

## QUALITY CONSCIOUSNESS AND INNOVATIONS...

They are thoroughly inspected and tested for quality and reliability by experienced engineers, faithfully uncompromising on quality. The checks begin with the incoming material and components and end only when the finished product is tested and despatched. We are committed to provide inspired services of the highest achievable standards for absolute satisfaction of our valued customers in terms of sales and service.

*Your trusted companion...  
on the road to prosperity...*



### DRYER DRUM

The dryer is accurately fabricated to ensure proper heating of aggregates with minimum heat loss. It is supported on steel rollers through steel tyres with idlers and guide rollers and is provided with segmented driving sprocket.

### FOUR BIN FEEDER

It is of single chassis construction. At each Bin, a radial gate is provided which can be opened in any position to regulate the aggregate flow. Individual endless belts fitted with variable speed motors discharges material onto the gathering conveyor as per the mix design.



## FEATURES

- Fully Computerised Plants upto 150 TPH Capacity.
- Mobile and Stationary.
- Wet Type and Bag House Filter Systems.
- Hot Mix Storage Silos.
- Global Presence with Prompt Product Support.

## ADVANTAGES

- All components used are of top quality.
- Moving and electrical parts are provided with safety covers.
- Ease of lubrication and dismantling has been built into the design for efficient maintenance and repair.
- Fabricated parts are thoroughly cleaned and treated before painting.
- Manufacturing is done with advanced, internationally recognised techniques.

## CONTROLS

A fully automatic control panel with feather touch controls are provided for controlling the quantity and quality of production with operator sitting in air-conditioned comfort.

All systems are completely synchronised with automatic / manual control of burners, load cell, mix temperature, cold feed, mineral, bitumen proportions, etc. Manual control is possible through over-ride system. Adequate safety measures are adopted to avoid overloading, short-circuit, etc.

## VIBRATORY SCREEN

A single-deck vibratory screen is provided to remove oversize aggregate received from the four bin feeder.

## MULTICYCLONE EXHAUST

The dust collection system consists of enclosed multiple cyclones, exhaust fan and chimney.

MODEL	CAPACITY
DM - 20	15 to 20 TPH
DM - 45	30 to 45 TPH
DM - 60	45 to 60 TPH
DM - 90	60 to 90 TPH
DM - 120	90 to 120 TPH
DM - 150	120 to 150 TPH

Higher capacity plants are available on specific enquiry.





## CONVEYORS

A slinger conveyor is provided which receives aggregate from the four bin feeder and feeds it to the dryer drum.

Loadout conveyor fitted with hydraulically operated hopper is provided at the discharge end of the dryer drum which feeds the hot mix material into tippers.

## DRYER BURNER

A fully automatic, high pressure, auto jet burner is mounted at one end of the drum.

## FLIGHT DESIGN

The drying and mixing unit of the plant demands complex flight design. Specially designed flights lift and cascade the aggregate to reduce the final moisture content to 0.5% (by weight).

## FILLER UNIT

Fabricated from steel plates, it feeds the required quantity of mineral to the dryer drum.

## ASPHALT (BITUMEN) TANK

Tank of 15/20 MT capacity is provided, fabricated from steel plates with 50 mm glasswool insulation, manhole, thermocouples, etc. Bitumen is pumped to the dryer drum through hot oil jacketed pipelines. Tanks are fitted with independent on-off type burners.

## FUEL TANK

One Tank of 2500 / 5000 / 10000 Ltrs. capacity is provided with each plant.



## ASPHALT DRUM MIX PLANT

### TECHNICAL SPECIFICATION

MODEL	DM-20	DM-45	DM-60	DM-90	DM-120	DM-150
<b>CAPACITY RANGE (TPH)*</b>	15 to 20	30 to 45	45 to 60	60 to 90	90 to 120	120 to 150
<b>DRYER</b>						
Length (m)	5	6.2	6.2	6.75	6.75	8.5
Diameter (m)	1.05	1.13	1.22	1.5	1.82	2.1
Insulation (Cerawool in mm)	25	25	25	25	25	25
Exhauster (CFM)	5500	7500	10500	14500	18500	22500
Burner Rating (Ltrs./Hr.)	150	150	250	350	550	900
<b>BIN FEEDER</b>						
No. of Bins	4	4	4	4	4	4
Bin Capacity (MT)	8	8	11	11	13	13
Belt Feeder Width (mm)	500	500	500	500	500	500
Gathering Conveyor Width (mm)	600	600	600	600	600	600
<b>SLINGER CONVEYOR</b>						
Conveyor Width (mm)	600	600	600	600	600	600
<b>LOADOUT CONVEYOR</b>						
Conveyor Width (mm)	600	600	600	600	600	600
Loadout Height (m)	3.2	3.2	3.2	3.2	3.2	3.2
Hopper Capacity (kg)	800	800	800	1000	1000	1000
<b>POWER REQUIREMENTS</b>						
Drum Drive (HP)	10	15	20	30	40	60
Exhauster (HP)	10	15	20	25	50	75
Bin Feeder Hopper (HP)	4 x 2	4 x 2	4 x 2	4 x 2	4 x 3	4 x 3
Gathering Conveyor (HP)	3	5	5	5	7.5	7.5
Slinger Conveyor (HP)	3	5	5	5	7.5	7.5
Vibratory Screen (HP)	1	1	1	1	2	2
Loadout Conveyor (HP)	3	5	5	5	7.5	7.5
Hydraulic Powerpack (HP)	2	2	2	2	5	5
Bitumen (Asphalt) Pump (HP)	3	3	3	3	3	5
<b>Filler Unit</b>						
Rotary valve (HP)	1.5	1.5	2	2	5	5
Blower (HP)	5	5	5	5	5	5
<b>Dryer Automatic Burner</b>						
Fuel Pump (HP)	2	2	2	2	3	5
Blower (HP)	3	3	5	10	15	25
Hot Oil Pump (HP)	0.5	0.5	0.5	0.5	0.5	0.5
<b>BITUMEN TANK</b>						
Capacity (MT)	15	15	15	20	20	15 x 2
Insulation (Glasswool in mm)	50	50	50	50	50	50
<b>FUEL TANK</b>						
Capacity (Ltrs.)	2500	2500	5000	5000	5000	10000
<b>TOTAL CONNECTED LOAD</b>						
Load (KVA)	80	100	120	135	220	300

\*Capacity @ 3% moisture content

Due to SPEEDCRAFTS Policy of continuous improvement / development, the technical data mentioned in this entire sheet is not binding and subject to change without notice.

# Components of Asphalt Plant



Four Bin Feeder



Dryer Drum



Control Panel



Dryer Burner



Vibratory Screen



Asphalt (Bitumen) Tank



Bitumen Burner



Filler Unit



Fuel Tank



Flight Design Inside Dryer Drum



Mobile Four Bin Feeder



Mobile Dryer  
With Multicyclone & Exhauster



Mobile Dryer Drum



Hot Mix Storage Silo



Bag House Filter

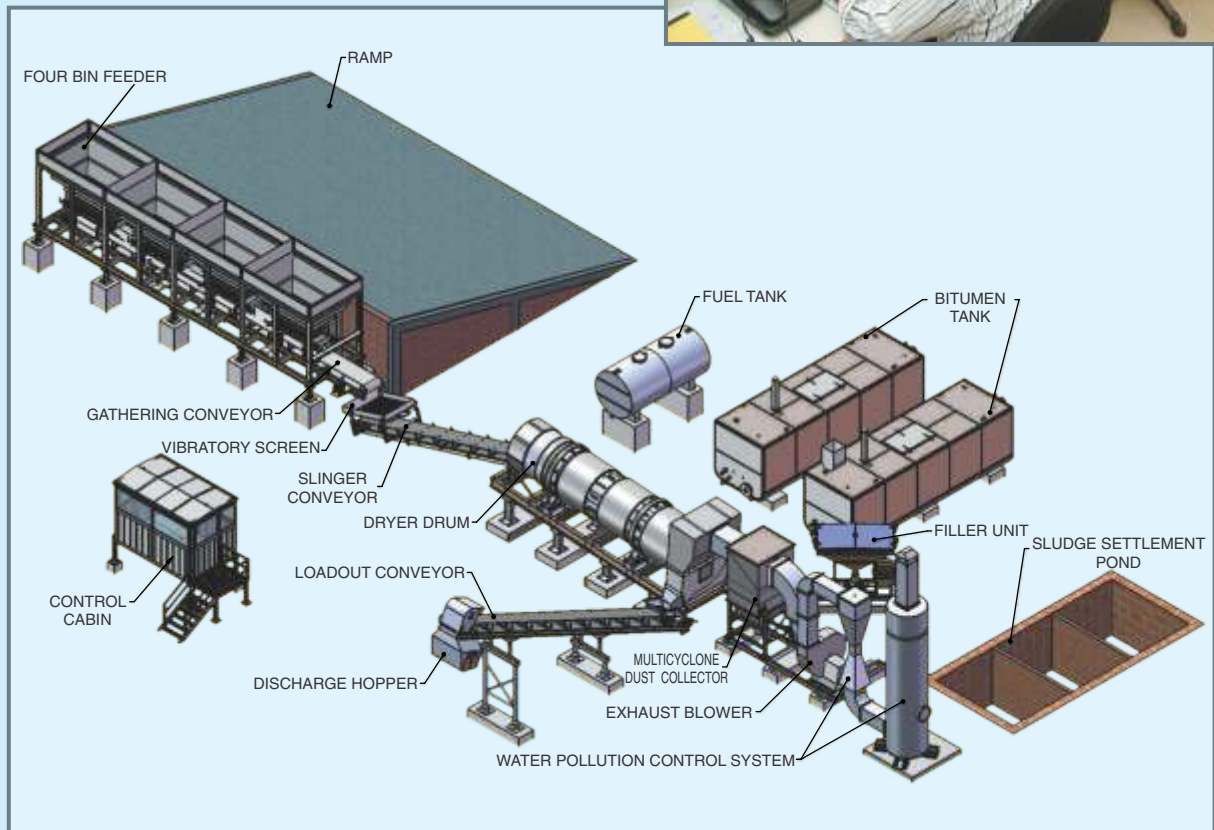
Certain components shown here are optional.  
Please refer our offer to know the exact scope of supply.

# R & D Division

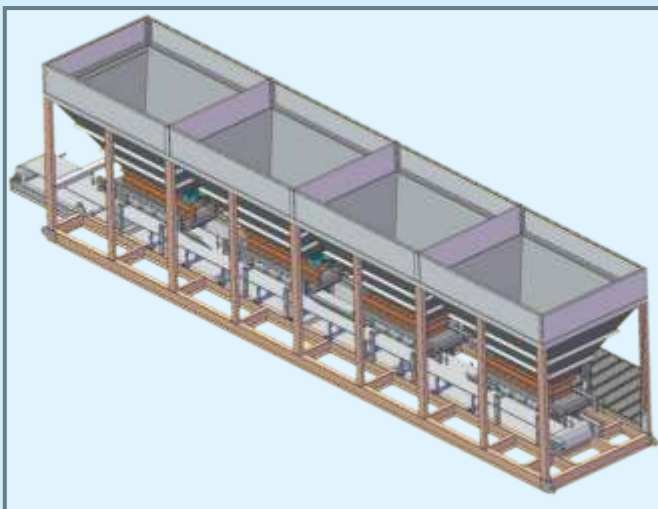
Equipped with latest design software and technology dedicatedly works on finding solutions to tomorrows needs. We offer tailor made plants as per individual customers requirement.



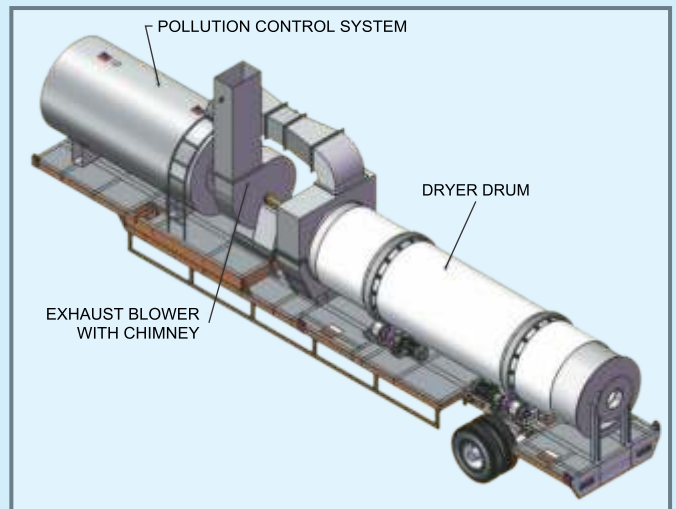
## General Layout of Drum Mix Plant



Land area requirement for installation - 40 mtr. x 40 mtr. (max.)



Stationary Four Bin Feeder



Mobile Dryer Drum with Wet Type Pollution Control System on same Chassis



# Few of our Valued Customers





## Exhibitions Worldwide



Intermat 2015, France



FOCI 2015, Nigeria



Samoter 2014, Italy



Batimatic 2014, Algeria



Cambuild 2014, Cambodia



Bauma Africa 2013, South Africa



Bauma 2013, Germany



Intermat 2012, France



Bauma 2012, China



Big 5 2012, UAE



Constech 2012, Thailand



Conexpo 2011, USA

# Other Products at a Glance



**ASPHALT BATCH MIX PLANT**

Asphalt Mixing Plants (batch type) are being manufactured with State of the art technology. These Plants are available from 80 to 260 TPH capacity.

An ideal machine for preparing wet mix macadam material for base and sub-base fitted with fully automatic microprocessor based controls. Available from 60 TPH to 240 TPH capacity.



**SOIL STABILISATION (WET MIX) PLANT**



**SELF LOADING CONCRETE MIXER**

With Technology from Italy, our self loading mixers are manufactured using key components from Europe. These are 4x4 drive with off-road capability & deliver real concrete output of 1 cbm, 2.5 cbm & 4 cbm.

Compact design and fully automatic mobile concrete plant is manufactured upto 20 cbm/hr. capacity. Ease of erection and operation is the key feature of this plant.



**MOBILE CONCRETE PLANT**



**PAVER FINISHER**

A mechanically propelled Paver with heated, fully floating, hydraulically operated vibrating screed with mechanical controls for adjustments of height and camber. Paving width from 2.5 to 4 mtr., paving thickness upto 205 mm.

An extremely compact and fully self-contained bitumen and aggregate mixing plant, trailer mounted on four pneumatic wheels with drawbar and turntable. Capacity upto 10 TPH.



**MOBILE HOT MIX PLANT**



**BITUMEN PRESSURE DISTRIBUTOR**

Truck mounted self propelled bitumen pressure distributor with suitable heating system and variable spray bars to operate on constant pressure system. Spraying width from 2.4 to 4.2 mtr. by extension bar.

Pothole Repairing Machine are manufactured with latest world proven technology. This is a compact, efficient and cost effective system, based on advanced pneumatic placement technology.



**POTHOLE REPAIRING MACHINE**



**DIESEL ROAD ROLLER**

Smooth wheeled Diesel Road Rollers with operating weight from 8 to 12 tonnes are fitted with 4 forward and 4 reverse speed gear box. The most popular compaction machine for low density roads.

A very effective machine to sweep roads prior to tack coating. Drive is through the PTO of the tractor and tractor hydraulics are used to lift and lower the machine on the surface to be swept. Standard sweeping width is 2.135 mtr.



**ROAD SWEEPER**

# SPEEDCRAFTS



Email  
[info@speedcrafts.com](mailto:info@speedcrafts.com)  
[info@speedcrafts.net](mailto:info@speedcrafts.net)

Website  
[www.speedcrafts.com](http://www.speedcrafts.com)  
[www.speedcrafts.net](http://www.speedcrafts.net)



Plants being containerised at Port

## SPEEDCRAFTS LIMITED

### MARKETING HEADQUARTERS

'Unitech Business Zone'  
Tower C, Unit No: 804  
Nirvana Country, Sector 50  
Gurgaon - 122 001, (Delhi NCR)  
Tel : +91-124-2219968  
Fax : +91-124-2219928

### CORPORATE OFFICE

'Layak Bhawan'  
Boring Canal Road  
Patna - 800 001, Bihar  
Tel : +91-612-2534514 / 2520914  
Fax : +91-612-2527029

### REGIONAL OFFICE

'Neelamber Building'  
Flat No. 5F, 5<sup>th</sup> Floor  
28-B, Shakespeare Sarani  
Kolkata - 700 017, West Bengal  
Tel : +91-33-22804458  
Fax : +91-33-22905390

### MANUFACTURING UNITS

#### UNIT - I

Plot No.1A, Sector-7, IIE (SIDCUL)  
Hardwar, Uttrakhand, India

#### UNIT - II

Layak Enclaves, Sahay Nagar  
Phulwarisharif, Patna, Bihar, India

CIN : U34100BR1971PLC000904



Plants under despatch